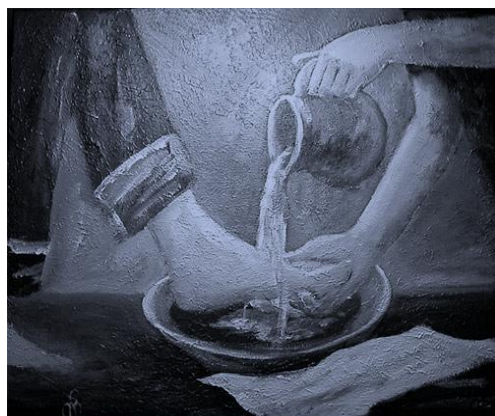


ST HILARY'S KEW/NORTH BALWYN

Commitment Booklet



A guide for choosing your area (s) of ministry service in 2012

Making, maturing and mobilising disciples of Jesus Christ.

How to complete the Commitment Sunday Response Form

Before you fill in the form please read this:

The areas for service in the next few pages cover most of the regular commitments made by volunteers to the ongoing work at St Hilary's Kew/North Balwyn and specifically to our regular services:
9am, 11am, 6pm at St Hilary's
9am, 10am at St Silas
7pm at Genazzano
10:30am Wednesday Communion at St Silas

Please prayerfully consider how you will complete the response card.

- **Please fill in your contact details on the front of the form.**
- **Please fill in a separate form for each service you wish to serve at. This will greatly assist us in the administration and co-ordination process.**
- **Enter the number for each area of service you are committing or recommitting to in the boxes. Include the a, b, c options**

e.g

1c

44

Please note:

Some areas of service are subject to an interview and /or training (even if not stated specifically). Training days are held at 12 John Street, and will take place on the 4th February and 24th June

- **If the area you are currently involved in or would like to become involved in is not listed, please use the comments section provided to give details.**
- **You can also go to our website to input your responses - www.sthils.com**

AREAS OF SERVICE RELATED TO THE WORSHIP SERVICE

Please fill out a card for **each service** you wish to serve at.
Eg 9am St Hilary's, 9am St Silas, 7pm Genazzano

1. Welcoming

Become part of the team that welcomes new people, makes them feel at home and engages with them after the service.

(for the 7pm congregation, this sometimes also involves the serving of food).

- a) **Greeters** - Welcome people as they enter, and facilitate a general feeling of community and belonging to the body.
- b) **Stewards** - Hand out the bulletin and pass the collection plate during the service.
- c) **Special Events** - Host Suppers or Afternoon teas for newcomers
- d) **Pastoral Follow-up** - Be part of a team to contact and follow-up congregational members. *Interview and training required.*
- e) **Flowers** - Arrange flowers on an occasional roster, at St Hilary's or St Silas. If you would like to help an experienced arranger please indicate.

2. Music Ministry

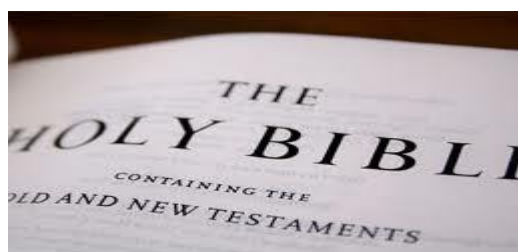
- a) **Worship musicians** - Instrumentalists and singers are welcomed for this rewarding and growing ministry. We would love to have you on the team!
- b) **Tech Team (7pm specific)** - Set-up (3:30pm-5:30pm) and pack-up (8:30pm-9:30pm) audio and lighting on Sunday nights.
- c) **Music Pack-up (7pm specific)** - Help the music team pack-up leads, stands and the stage straight after the service. *(approx.. 30 minutes)*
- d) **Music at St Silas** - Work with the music committee in the presentation of classical concerts at St Silas *(4 times a year).*

3. Worship Service

- a) **Bible Reading** - Read the Scripture passage during the service. *(Roster).*
- b) **Pro Presenter Operator** - Operate the computer to display service visuals. *(Roster).*
- c) **Sound Desk** - Help to set up the audio gear and operate the sound desk during the service on a regular roster. *Training is available.*

4. Communion

- a) **Servers** - Assisting with communion during the service *(Monthly).*
- b) **Helping to wash linen for communion tables** *(Roster).*



5. Prayer Ministry

- a) **Service prayer-** Praying with people before, during and/or after services.
Training required
- b) **Prayer by appointment** - Praying for those people requesting an appointment. (*Monday afternoon as required*).
- c) **Confidential Prayer Circle** – Praying for those in need as required.
- d) **Prayer for missionaries** - Praying for the missionaries we support.
(Monthly).
- e) **Healing Prayer service – 1st Wednesday of month at St Hilary's.**
Be involved in the preparation, music, prayer ministry, or teaching of this special monthly service, *Interview required.*

6. Children's Ministry – Working with Children Check required

- a) **Kid's Focus** - Use your creativity to present the Kid's teaching time in church on a regular roster. *Interview and training required.*
- b) **Sunday Club Co-ordinator** - Co-ordinate Sunday Club leaders on Sunday Morning (*school term only*).
- c) **Sunday Club Leader** - Love and lead a small group of children each Sunday during school term. (*4 training sessions per year*).

7. Hospitality

- a) **Morning Tea** - Assist with the preparation and serving of tea and coffee following the worship service.
- b) **Supper (Café Church specific)** - Assist with preparation and serving of beverages and supper. (*Monthly roster*)
- c) **Catering for occasional meals** - Help to prepare meals on an occasional basis.
- d) **Sausage Sizzle (St Hilary's 9am specific)-** Become part of the team which cooks a BBQ once a month after the 9am service.

8. Offerings -

- a) **Counting the Offering Money** - Assist with the counting and banking of Sunday's collections. Monday mornings- meeting at 9am. (*Roster*)

AREAS OF SERVICE THAT ARE NOT RELATED TO THE WORSHIP SERVICE

9. a) **Evangelism** (for example, **Alpha**) - Be part of the team which explains what Christianity is all about to inquirers. Leading or assisting in discussion groups, setting up, serving meals or cleaning up etc...
Held at various times throughout the year.
b) **Tool box Parenting Course** - To undergo training to be a course leader and leading a course of 6 sessions once a year or to help run the toolbox parenting courses. *Training provided.*
10. **CRE Teaching** - Working with Children Check required.
Teach a group of school children for 2 – 3 1/2hour lessons/week at a local primary school. *Training is required through ACCESS Ministries.*
11. **Small Groups** - Lead a small group for caring and learning with those in your congregation. *Interview and training required.*
12. **West Papuan Support** - Supporting community members with help as required, e.g. shifting house, practicing English, developing contacts, driving practice etc...
13. **Crossroads** - Meet with a group of intellectually impaired adults. Involves socialising and sharing in craft, music, devotions and a light supper. Held on the 2nd Tuesday of every month, 7pm - 9pm, St Hilary's Hall.
14. **Mission & Social Justice** - Help us to focus on sharing the gospel beyond our local community.
15. a) **Bookstall** - Setting up and staffing the bookstall at the conclusion of the service. *(Specific to St Hilary's services - Monthly roster)*
b) **Fair Trade Stall** - Assist at the stall *(held once a month)* after the 9am service.
16. a) **Pastoral visiting** - To be involved in general pastoral visitation (homes, hospitals).
b) **Worship at Eva Tilley** - Be involved with the worship team at Eva Tilley Nursing/Retirement home.
1st Wednesday every month, 11:15am – 12noon.
17. **Meal Support** - Provide meals for families during illness and those with new babies, as required.

18. **Food Drive** – Be a part of a team to help set and run the annual food drive. (*Annually*).
19. **Reception** - At St Hilary's. Answering the phone, offering general assistance around the office and welcoming visitors for a morning or afternoon during the week.
20. **Working Bees** - To help plan, co-ordinate and run working bees or to help provide lunch at St Hilary's. Held on a Saturday morning, once a term.
21. **Window cleaning** - To help with the cleaning of windows.
22. **Men's working groups** - Doing various maintenance jobs at St Hilary's (Thursday afternoons, 1pm–4pm) or St Silas (Wednesday mornings, 9am-11am).
23. **Gardening** - To be involved in a regular gardening group mainly at St Hilary's.
24. **Church and Community week / weekend** - Assist with the activities for the Church and Community week / weekend.
25. **Raymond Island Summer Camps** - Helping to organise and run (Camp Directors) one of the Summer Camps at Raymond Island OR be an activity leader at one of the camps. (*1 week/early January*).
26. **Camp Cormorant Maintenance** - To plan and assist in working parties. Work on site over occasional weekends.
27. **All Church Parish Dinner** - Held bi-annually. Be part of the team that organises this great church time of community and fun.
28. **Messy Church-** Be on a team for this new, exciting outreach ministry. Need for welcomers, people who love craft, musicians, cooks and general helpers to set up and pack up. (*one Sunday afternoon/month.*)

AREAS OF SERVICE THAT ARE SPECIFIC TO CHILDRENS AND FAMILIES AT ST HILARY'S

WORKING WITH CHILDREN CHECK REQUIRED

*Unless otherwise indicated with a **

GUMNUTS (pre-schoolers)

29. **Playgroups** - Join or lead a group during school term. A key way of connecting with local families. Come and support mums and their children or help with morning tea.
30. **Mainly Music** - A weekly group which explores music with pre-school children. A key way of connecting with local families. Come and support mums and their children or help with morning tea.
31. **Gumnuts Newsletter** - Help to produce a newsletter each term for the Gumnut families.
32. **WOT** - To provide childcare for mother's attending Women on Tuesday at St Hilary's or Thursday at St Silas.
33. **Special Events** - Help organise or be involved in (welcoming, morning tea, music etc.) events throughout the year. E.G. Mother's Day Breakfast, Jumping Jellybeans Concert. Christmas "Carols" services etc.

PRIMARY FAMILIES (prep to year 6)

34. **Holiday Program** - To be part of one of the following teams to help organise our school holiday program in July.
 - a) Music
 - b) Welcoming
 - c) Café for Parents
 - d) Sport
 - e) Celebration Finale
 - f) Leading Groups
35. **Musical** - Connect with children from our local schools through the annual musical.
36. **Special Events** - Help organise or be involved in special events throughout the year. e.g. Bush dance, trivia night etc...
37. **Leader's Lunch** – Host a Sunday Club Assistant Leader's Lunch. Involves hosting 15 – 20 young leaders at your home. (*Once a year.*)

SPECIFIC TO YOUTH AND YOUNG ADULTS

- 38. Youth Ministry Leader** - Aged 18+ , Youth Leaders can be part of our Wipeout and Thank God It's Friday teams which operate on Friday nights or lead a Small Group which meet a different times throughout the week.
- 39. Junior Youth Ministry Leader** - Of high school age, Junior Leaders help out with either Wipeout, Thank God It's Friday or Small Groups in an apprentice leader type role where they have lots of responsibility but also learn on the job.
- 40. Youth Ministry Coach** - Aged 18+, Coaches support youth leaders in their roles and keep them accountable to their commitments. The time requirements are flexible. Youth Ministry experience is a must.
- 41. Friday Night Involvement** - We need high-schoolers who are keen to host, give talks, run games, welcome, work behind the scenes, etc... If you're keen to get involved, we'll help you make it happen.
- 42. Teaching Night Team** – We need Young Adults to be a part of the planning and organisation of our Teaching Nights over the year.
- 43. YAKConf Team** – Be a part of the Young Adults team involved in organising YAKConf 2013
- 44. CONNECT Team** – Be a part of the Young Adults team involved in planning events that connect church and non-church friends.
- 45. Teaching and Equipping Team** – Be a part of the Young Adults team that prepares booklets and bible studies to accompany our sermon series.

ALPHABETICAL LISTING OF AREAS OF SERVICE

- 27. All Church Parish Dinner
- 15. a) Bookstall
b) Fair Trade Stall
- 26. Camp Cormorant Maintenance
- 6. Children's Ministry – Working with Children Check required
 - a) Kid's Focus
 - b) Sunday Club Co-ordinator
 - c) Sunday Club Leader
- 24. Church and Community week / weekend
- 4. Communion
 - a) Servers
 - b) Helping to wash linen for communion tables
- 44. CONNECT Team.
- 10. CRE Teaching - Working with Children Check required.
- 13. Crossroads
- 9. a) Evangelism (for example, Alpha)
b) Tool box Parenting Course
- 18. Food Drive
- 41. Friday Night Involvement - Working with Children Check required.
- 23. Gardening
- 31. Gumnuts Newsletter
- 7. Hospitality
 - a) Morning Tea
 - b) Supper (Café Church specific)
 - c) Catering for occasional meals
 - d) Sausage Sizzle (St Hilary's 9am specific)
- 34. Holiday Program - Working with Children Check required.
 - a) Music
 - b) Welcoming
 - c) Café for Parents
 - d) Sport
 - e) Celebration Finale
 - f) Leading Groups
- 39. Junior Youth Ministry Leader - Working with Children Check required.
- 37. Leader's Lunch
- 30. Mainly Music- Working with Children Check required.
- 28. Messy Church - Working with Children Check required.
- 2. Music Ministry
 - a) Worship musicians
 - b) Tech Team (7pm specific)
 - c) Music Pack-up (7pm specific)
 - d) Music at St Silas

- 35. Musical - Working with Children Check required.
- 8. Offerings
 - a) Counting the Offering Money
- 16. a) Pastoral visiting - Working with Children Check required.
 - b) Worship at Eva Tilley
- 29. Playgroups - Working with Children Check required.
- 5. Prayer Ministry
 - a) Service prayer
 - b) Prayer by appointment
 - c) Confidential Prayer Circle
 - d) Prayer for missionaries
 - e) Healing Prayer service – 1st Wednesday of month at St Hilary's
- 25. Raymond Island Summer Camps - Working with Children Check required.
- 19. Reception
- 11. Small Groups
- 33. Special Events (PRE-SCHOOLERS) - Working with Children Check required.
- 36. Special Events (PREP TO YEAR 6) - Working with Children Check required.
- 42. Teaching Night Team - Working with Children Check required.
- 45. Teaching and Equipping Team - Working with Children Check required.
- 1. Welcoming
 - a) Greeters
 - b) Stewards
 - c) Special Events
 - d) Pastoral Follow-up
 - e) Flowers
- 12. West Papuan Support
- 21. Window cleaning
- 20. Working Bees
- 4. Worship Service
 - a) Bible Reading
 - b) Pro Presenter Operator
 - c) Sound Desk
- 32. WOT
- 43. YAKConf Team
- 38. Youth Ministry Leader - Working with Children Check required.
- 40. Youth Ministry Coach - Working with Children Check required.

*“Each of you should use whatever gift you have received to
serve others, as faithful stewards of God’s
grace in its various forms.”*

1 Peter 4:10